



香港教育大學

The Education University
of Hong Kong

FACULTY OF LIBERAL ARTS AND SOCIAL SCIENCES

Undergraduate Programmes 2019 Entry



FACULTY OF LIBERAL ARTS AND SOCIAL SCIENCES

博文及社會科學學院



The Faculty of Liberal Arts and Social Sciences (FLASS) was established as a strategic pathway to academic excellence for The Education University of Hong Kong (EdUHK) (formerly known as “The Hong Kong Institute of Education”), which enjoyed rapid expansion and significant transformation since its inception in 1994. Leveraging the vast experiences in interdisciplinary research and teaching of the University, the Faculty is committed to creating a learning environment conducive to nurture students to be intellectually active, engaging positively in local, regional and global affairs; and acting sensibly and proactively to promote social change and human betterment in the era of globalisation.

The Faculty comprises 6 academic departments and 5 centres including 3 research centres.

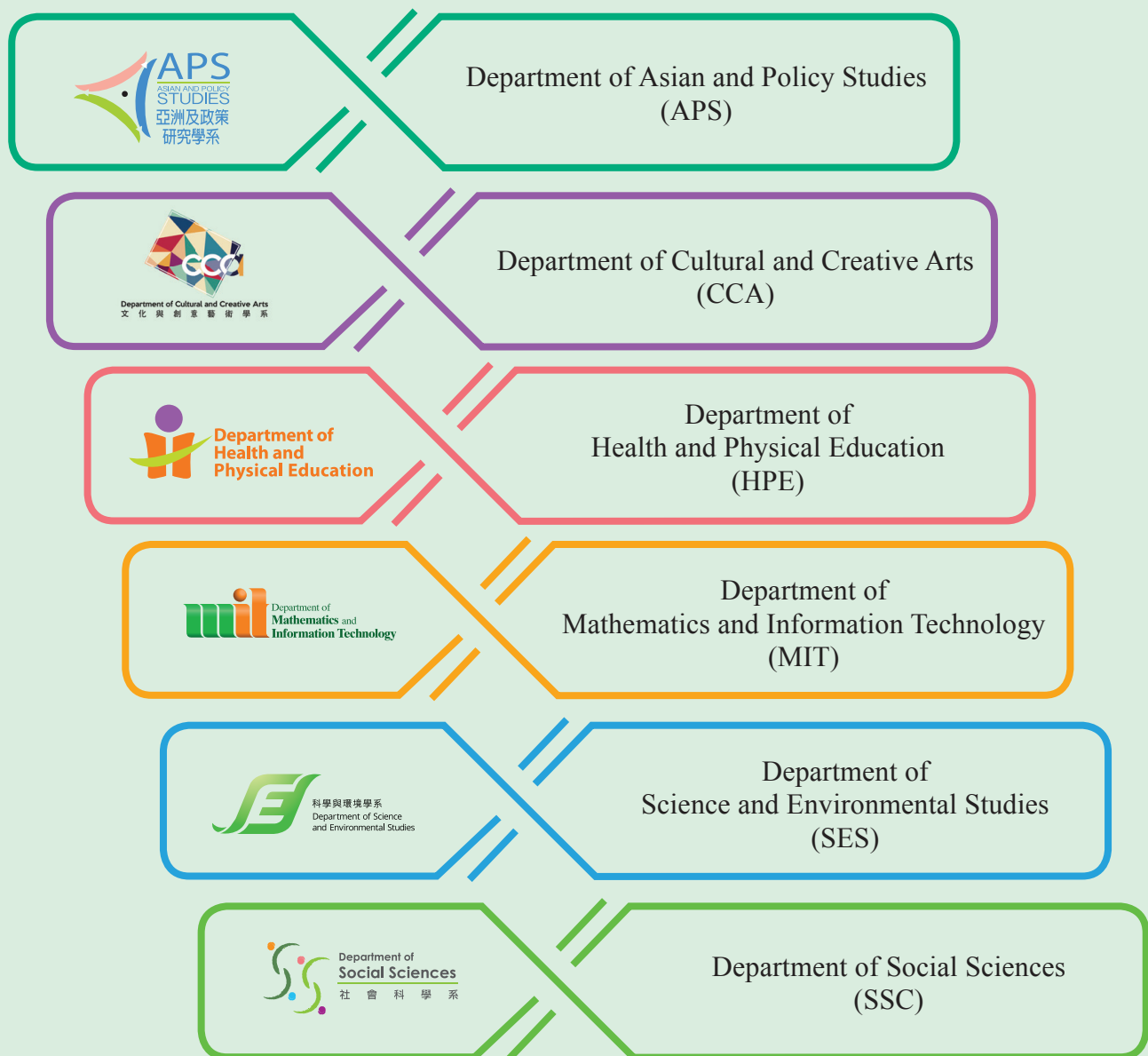
With strong research and academic links with regional and international institutions, the Faculty has adopted the overarching educational philosophy “Nurturing Caring Leaders with Global Vision”, which governs curriculum design and student learning. The FLASS dedicates to thrive and facilitate our students to become educators and social caring professionals.

Our Mission

- Nurturing caring leaders with global vision
- Conducting research to enhance human well-being
- Fostering an interdisciplinary research and innovative teaching culture
- Reaching out to promote social change
- Engaging in international / regional collaborations for academic excellence



Departments



Centres

- Centre for Education in Environmental Sustainability (CEES)
- Centre for Greater China Studies (CGCS)
- Research Centre for Transmission of Cantonese Opera (RCTCO)
- Resource Centre for Interdisciplinary and Liberal Studies (RCILS)
- EdUHK Christian Faith and Development Centre (CFDC)

Undergraduate Programmes

Government-funded Programmes

Programmes in Education (Leading to Qualified Teacher Status)

- Bachelor of Education (Honours) (Business, Accounting and Financial Studies) (Five-year Full-time)
- Bachelor of Education (Honours) (Geography) (Five-year Full-time)
- Bachelor of Education (Honours) (Physical Education) (Five-year Full-time)
- Bachelor of Education (Honours) (Primary) - General Studies / Mathematics (Five-year Full-time)
- Bachelor of Education (Honours) (Science) (Five-year Full-time)
- Bachelor of Education (Honours) (Secondary) - Information and Communication Technology (Five-year Full-time)
- Bachelor of Education (Honours) (Secondary) in Mathematics (Five-year Full-time)

Co-terminal Double Degree Programmes (Leading to Qualified Teacher Status)

- Bachelor of Arts (Honours) in Creative Arts and Culture and Bachelor of Education (Honours) (Music) (Five-year Full-time) (Co-terminal Double Degree)
- Bachelor of Arts (Honours) in Creative Arts and Culture and Bachelor of Education (Honours) (Visual Arts) (Five-year Full-time) (Co-terminal Double Degree)

Programmes in Complementary Studies

- Bachelor of Arts (Honours) in Creative Arts and Culture - Music / Visual Arts (Four-year Full-time)
- Bachelor of Social Sciences (Honours) in Global and Environmental Studies (Four-year Full-time)
- Bachelor of Social Sciences (Honours) in Global and Hong Kong Studies (Four-year Full-time) (Senior Year Entry only)
- Bachelor of Social Sciences (Honours) in Policy Science and Management (Four-year Full-time) (Senior Year Entry only)

Self-financed Programmes

- Bachelor of Arts (Honours) in Liberal Studies Education (Four-year Full-time) (Year 2 and 3 Entries only)
- Bachelor of Health Education (Honours) (Two-year Full-time / Three-year Part-time)
- Bachelor of Science Education (Honours) (Sports Science) (Four-year Full-time) (Year 3 Entry only)
- Bachelor of Social Sciences (Honours) in Greater China Studies (Four-year Full-time) (Year 1 Entry only)
- Bachelor of Social Science Education (Honours) (Greater China Studies) (Four-year Full-time) (Year 3 Entry only)

Experiential Learning

Our students engage actively in the village earth with passion to promote human well-being. Through outbound exchange, international summer school, short-term programmes and voluntary services around the world and in the Greater China region, students broaden their horizons and strengthen their language skills and confidence, which are key components for a successful career.



New Zealand



South Korea



United Kingdom



Singapore



Japan



South Africa



Africa



Hong Kong



Griffith UNIVERSITY Logan Campus

Australia



China



South Korea

Faculty of Liberal Arts and Social Sciences (FLASS)



(852) 2948 7151



flass@eduhk.hk



EdUHK.FLASS



Room 4, G/F, Block B2,
The Education University of Hong Kong,
No. 10 Lo Ping Road, Tai Po, New Territories, HKSAR



(852) 2948 7162



www.eduhk.hk/flass



flasseduhk



Application and Admission Enquiries (Registry)



(852) 2948 6886



admission@eduhk.hk



(852) 2948 6162



www.eduhk.hk/acadprog



Every effort has been made to ensure that information contained in this prospectus is correct. Changes may be made from time to time and the University reserves the right to make amendments to any information contained in this prospectus without prior notice. In the event of inconsistency between information contained in the prospectus and any University or Programme policies and regulations or where an interpretation is required, the decision of the University shall be final.

Any aspect of the course (including, without limitation, the content of the course and the manner in which the course is taught) may be subject to change at any time at the sole discretion of the University. Without limiting the right of the University to amend the course, it is envisaged that changes may be required due to factors such as staffing, enrolment levels, logistical arrangements and curriculum changes.

The information given in this publication is accurate as of June 2019.



This booklet is printed on FSC certified paper.